

**LDHB Antibody (monoclonal) (M01)****Mouse monoclonal antibody raised against a full length recombinant LDHB.****Catalog # AT2689a****Specification**

---

**LDHB Antibody (monoclonal) (M01) - Product Information**

Application	WB, IHC, IF, E
Primary Accession	<a href="#">P07195</a>
Other Accession	<a href="#">BC002362</a>
Reactivity	Human
Host	mouse
Clonality	Monoclonal
Isotype	IgG1 kappa
Calculated MW	36638

**LDHB Antibody (monoclonal) (M01) - Additional Information****Gene ID** 3945**Other Names**

L-lactate dehydrogenase B chain, LDH-B, LDH heart subunit, LDH-H, Renal carcinoma antigen NY-REN-46, LDHB

**Target/Specificity**

LDHB (AAH02362.1, 1 a.a. ~ 334 a.a) full-length recombinant protein with GST tag. MW of the GST tag alone is 26 KDa.

**Dilution**WB~~1:500~1000  
IHC~~1:100~500  
IF~~1:50~200  
E~~N/A**Format**

Clear, colorless solution in phosphate buffered saline, pH 7.2 .

**Storage**

Store at -20°C or lower. Aliquot to avoid repeated freezing and thawing.

**Precautions**

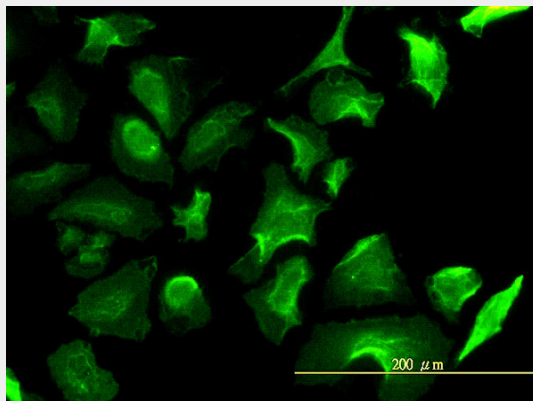
LDHB Antibody (monoclonal) (M01) is for research use only and not for use in diagnostic or therapeutic procedures.

**LDHB Antibody (monoclonal) (M01) - Protocols**

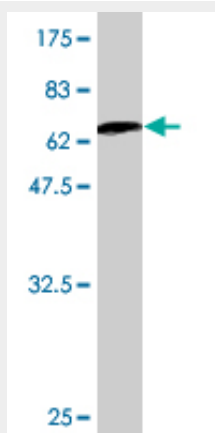
Provided below are standard protocols that you may find useful for product applications.

- [Western Blot](#)
- [Blocking Peptides](#)
- [Dot Blot](#)
- [Immunohistochemistry](#)
- [Immunofluorescence](#)
- [Immunoprecipitation](#)
- [Flow Cytometry](#)
- [Cell Culture](#)

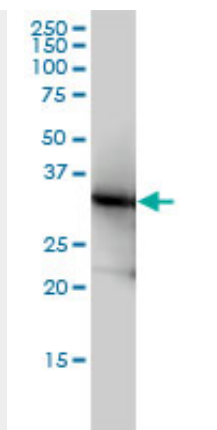
#### LDHB Antibody (monoclonal) (M01) - Images



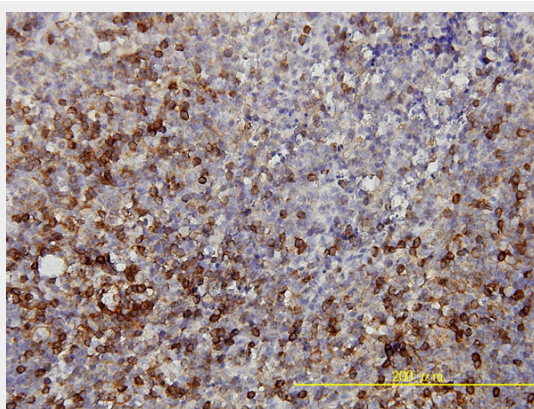
Immunofluorescence of monoclonal antibody to LDHB on HeLa cell. [antibody concentration 10 ug/ml]



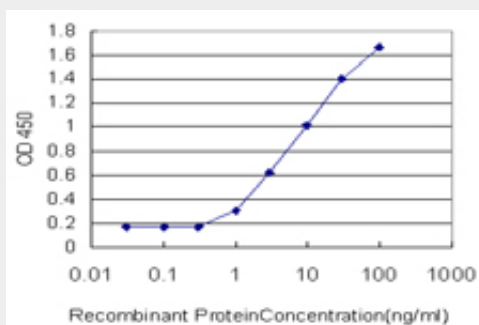
Antibody Reactive Against Recombinant Protein. Western Blot detection against Immunogen (62.48 KDa) .



LDHB monoclonal antibody (M01), clone 2H6 Western Blot analysis of LDHB expression in HeLa (Cat # AT2689a)



Immunoperoxidase of monoclonal antibody to LDHB on formalin-fixed paraffin-embedded human tonsil tissue. [antibody concentration 5 ug/ml]



Detection limit for recombinant GST tagged LDHB is approximately 1ng/ml as a capture antibody.

### LDHB Antibody (monoclonal) (M01) - Background

This gene encodes an enzyme which catalyzes the reversible conversion of lactate and pyruvate, and NAD and NADH, in the glycolytic pathway. Mutations in this gene are associated with lactate dehydrogenase B deficiency. Pseudogenes have been identified on the X chromosome and on chromosome. Multiple alternatively spliced variants, encoding the same protein, have been identified.

### LDHB Antibody (monoclonal) (M01) - References

1. Pilot application of iTRAQ to the retinal disease Macular Telangiectasia. Len AC, Powner MB, Zhu L, Hageman GS, Song X, Fruttiger M, Gillies MC. J Proteome Res. 2011 Nov 21. 2. Quantitative

Proteomics Analysis Reveals BAG3 as a Potential Target to Suppress SARS-CoV Replication. Zhang L, Zhang ZP, Zhang XE, Lin FS, Ge F. J Virol. 2010 Apr 14. [Epub ahead of print]

**LDHB Antibody (monoclonal) (M01) - Citations**

- [LDHB and FABP4 are Associated With Progression and Poor Prognosis of Pancreatic Ductal Adenocarcinomas.](#)